

AQUAPHOR®
water filters

Product Catalog

2024



AQUAPHOR **Consumer, Professional** **and Industrial Products**

R&D leader in decentralized water purification from filter bottles for consumers to large systems for small towns and manufacturing plants. AQUAPHOR manufacturing, research and development facilities total 53 000 m², including 54 000 m² of modern manufacturing in Estonia, 200 m² in Israel, engineering and production facilities in Kazakhstan, Serbia and China.



Estonia, Narva
AQUAPHOR filter manufacturing



Haifa, Israel
Industrial & Medical RO Systems



AQUAPHOR products
and production facilities
have been certified by TUV
and SGS since 2006.

Estonia, Sillamae
AQUAPHOR filter manufacturing

AQUAPHOR Technologies



Microfiber AQUALEN™

Patented AQUAPHOR AQUALEN™ adsorbents selectively remove heavy metals.

Filter jugs: AQUALEN™ and Innovative Filtration Matrix

Patented AQUALEN™ microfibers shape sorbents into a matix, which ensures filtration of every water drop.

Cartridges with AQUALEN™ are especially efficient in reducing heavy metals (mercury, lead, copper etc.), as well are performing great reducing chlorine, limescale, pesticides, phenols and other harmful substances.

The contact surface of AQUALEN™ microfibers is 33 times larger than that of traditional ion-exchange sorbents. The larger the surface, the more impurities are filtered.

Basic Technology

Water flows through random channels:

- Limited contact time
- Limited filter performance
- Limited filter life



AQUALEN™ Advanced Technology

Water is guided to the enlarged filtration surface:

- Greater contact time
- Greater filter performance
- Greater filter life

Undercounter filters with Microfiber AQUALEN™ and hollow-fiber ultrafiltration membranes

AQUAPHOR Carbon Blocks contain AQUALEN™ and powdered activated carbon, providing low flow resistance and high capacity for removing heavy metals, organic inpurities and bacteria.

RO systems: Water-on-water Tank

Patented AQUAPHOR RO system provides high permeate recovery, lower energy consumption and efficient operation even with low tap pressure in a compact, durable housing.



Reverse Osmosis Filtration System

RO membranes are the most effective way to remove salts, organic and inorganic impurities from water.

Premium drinking water

RO system turns your tap water into pure, soft and great tasting water.

Reverse osmosis filters remove:

viruses, bacteria, heavy metals, nitrates, nitrites, arsenic, limestone, pesticides, active chlorine, organic compounds, colloidal iron, drugs (antibiotics, hormones)



Click & Turn: Easy Use

Easy cartridge replacement.
Clean and safe maintenance.



Long-term elimination
of hardness and
limescale.



Recommended
for allergy patients
and children.



AQUAPHOR water filtration
is a sustainable way to cut
daily plastic waste.

RO-202S

Use airgap for dishwashers and RO
is mandatory in the EU, USA and UK.



Advantages:

- Computer controlled drain water discharge.
- LED indicators for timely cartridge replacement.
- Mineralization of water with magnesium Mg^{2+} .
- 5 L storage tank.

**Built-in high pressure pump
for maximum efficiency**

Size: 411 × 486 × 195 mm

Net weight: 12 kg

Cartridges



K1

Pre-filter 2 in 1

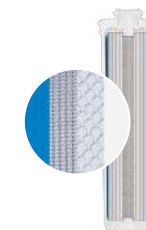
- Innovative cartridge combines mechanical and sorption filtration.
- High capacity prefiltration media removes sand and other particles up to 10 microns.
- Composite matrix with AQUALEN™ micro-fibers provide exceptionally high capacity for removal of rust and suspended solids.
- Sorption area cuts the impurities up to 3 microns thanks to the patented Carbon Block + AQUALEN™ technology.



K2

Sorption treatment and filtration

- Reduces suspended and sediment particles 2 microns or larger.
- Carbon Block + AQUALEN™. Reduces organic impurities and active chlorine in the water.



RO-100S

Membrane cartridge

- Reverse osmosis membrane removes even the tiniest amounts of impurities.
- Protection against bacteria, viruses, and protozoa (microorganisms).
- Capacity 380 L per day (100 gallons).



K7BM

Microfiltration, water conditioning and mineralization

- Provides reliable protection against bacteria. Hollow fiber membrane removes all particles larger than 0.1 micron.
- Enriches water with the healthy minerals Mg^{2+} and Ca^{2+} .

RO-102S EU

Use airgap for dishwashers and RO is mandatory in the EU, USA and UK.



A compact, productive and water-efficient RO system with a 5 L storage tank.

Advantages:

- Works with pressure as low as 2 bar.
- Takes up much less space under the sink than a basic reverse osmosis unit.
- The filter purifies water without the use of any chemical additives.

Size: 371 x 420 x 190 mm

Net weight: 6.1 kg

Cartridges

K1

Pre-filter 2 in 1

- Innovative cartridge combines mechanical and sorption filtration.
- High capacity prefiltration media removes sand and other particles up to 10 microns.
- Composite matrix with AQUALEN™ micro-fibers provide exceptionally high capacity for removal of rust and suspended solids.
- Sorption area cuts the impurities up to 3 microns thanks to the patented Carbon Block + AQUALEN™ technology.



K2

Sorption treatment and filtration

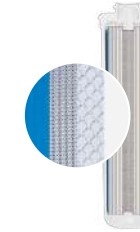
- Reduces suspended and sediment particles 2 microns or larger.
- Carbon Block + AQUALEN™. Reduces organic impurities and active chlorine in the water.



RO-100S

Membrane cartridge

- Reverse osmosis membrane removes even the tiniest amounts of impurities.
- Protection against bacteria, viruses, and protozoa (microorganisms).
- Capacity 380 L per day (100 gallons).



K7BM

Microfiltration, water conditioning and mineralization

- Provides reliable protection against bacteria. Hollow fiber membrane removes all particles larger than 0.1 micron.
- Enriches water with the healthy minerals Mg^{2+} and Ca^{2+} .





RO-101S EU

Use airgap for dishwashers and RO is mandatory in the EU, USA and UK.



A compact, productive and water-efficient RO system with a 5 L storage tank.

Advantages:

- Works with pressure as low as 2 bar.
- Takes up much less space under the sink than a basic reverse osmosis unit.
- The filter purifies water without the use of any chemical additives.

Size: 371 x 420 x 190 mm

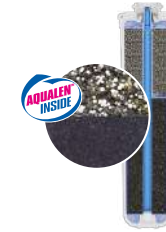
Net weight: 6.1 kg

Cartridges

K1

Pre-filter 2 in 1

- Innovative cartridge combines mechanical and sorption filtration.
- High capacity prefiltration media removes sand and other particles up to 10 microns.
- Composite matrix with AQUALEN™ microfibers provide exceptionally high capacity for removal of rust and suspended solids.
- Sorption area cuts the impurities up to 3 microns thanks to the patented Carbon Block + AQUALEN™ technology.



K2

Sorption treatment and filtration

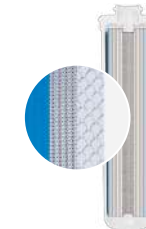
- Reduces suspended and sediment particles 2 microns or larger.
- Carbon Block + AQUALEN™. Reduces organic impurities and active chlorine in the water.



RO-50S

Membrane cartridge

- Reverse osmosis membrane removes even the tiniest amounts of impurities.
- Protection against bacteria, viruses, and protozoa (microorganisms).
- Capacity 190 L per day (50 gallons).



K7BM

Microfiltration, water conditioning and mineralization

- Provides reliable protection against bacteria. Hollow fiber membrane removes all particles larger than 0.1 micron.
- Enriches water with the healthy minerals Mg^{2+} and Ca^{2+} .



OSMO PRO **NEW**

The new RO system comes in two models of the different membrane capacity: 50 EU and 100 EU. It is a budget-friendly and practical solution with the tank for 8 L of soft, purified water. Effectively removes limescale and any impurities found in tap water.

99,99%
PROTECTION
from bacteria
and protozoa

Mg²⁺
enriches water
with magnesium

COMPLETE
ABSENCE
NO SCALE



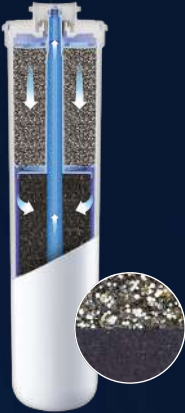
WATER PURIFIER
OSMO **PRO** 50 EU

Membrane productivity up to **190** liters per day

WATER PURIFIER
OSMO **PRO** 100 EU

Membrane productivity up to **380** liters per day

PRO 1

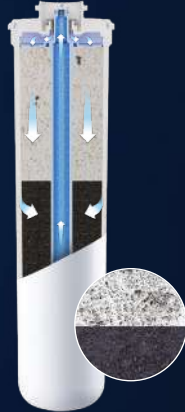


Stage 1

Pre-filtration

- Combines mechanical and sorption filtration in one cartridge.
- Increased AQUALEN™ microfiber content allows for enhanced dirt retention and iron removal.
- Removes particles up to 3 microns.

PRO HFM



Stage 3

Removal of bacteria.
Water mineralization

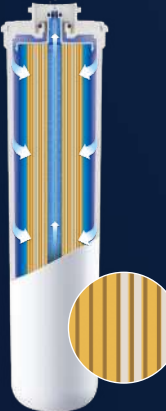
- Enriches the water with Mg, ensuring mineral balance.
- Improves the taste of drinking water.
- Antibacterial protection thanks to the hollow fiber membrane.
- Removal of particles over 0.1 micron.

Reduces:

- Bacteria
- Viruses
- Heavy metals
- Arsenic
- Nitrates, nitrites
- Pesticides
- Limestone
- Active chlorine
- Organic compounds
- Colloidal iron
- Pharmaceuticals (antibiotics, hormones)

PRO 50

PRO 100



Stage 2

Membrane cartridge

- Prevents scale build-up and iridescent film formation on the water surface caused by hardness salts. Protects your household kitchen appliances.
- Removes iron (Fe²⁺) and manganese.
- Contains a mix of high-quality ion-exchange resins.

50 gallons per day
190 L per day

100 gallons per day
380 L per day

OSMO PRO 50 EU	PRO 1 PRO 50 PRO HFM
OSMO PRO 100 EU	PRO 1 PRO 100 PRO HFM



AUTO LOCK —
instant and
easy cartridge
replacement.

Under-Sink System

High-quality adsorption filters for efficient tap water filtration from both visible particles and dissolved substances.



Click & Turn: Easy Use

Easy cartridge replacement.
Clean and safe maintenance.



STC: absolute safety

Materials used in the AQUAPHOR water filters meet "Food Grade" global safety standards.



Tested for 250 000 cycles

It can hold cyclic pressure (water-hammer effects) in 250 000 cycles.

Crystal Series Filters



Weight: 3 kg
Size: 26 x 9 x 35 cm

Crystal

Efficiently filters water while preserving its mineral composition.
For initially soft water

Cartridges K3-K2-K7

Removes particles up to 0.8 microns. High quality system for deep filtration of drinking water.

Technical details:

Filtration rate: 2.5 L/min
Filtration capacity: 8000 L

Removes:

chlorine, phenol, pesticides, petroleum products, heavy metals



Weight: 3 kg
Size: 26 x 9 x 35 cm

Crystal A

Efficiently filters water while preserving its mineral composition.
For initially soft turbid water

Cartridges K5-K2-K7

Removes particles up to 0.8 microns. The system is designed for filtration of water with high content of sand, rust and other suspensions.

Technical details:

Filtration rate: 2.0 L/min
Filtration capacity: 6 000 L

Removes:

chlorine, phenol, pesticides, petroleum products, heavy metals



Weight: 3 kg
Size: 26 x 9 x 35 cm

Crystal H

Reduces water hardness,
prevents scale formation.
For initially hard water

Cartridges K3–KH–K7

Removes particles up to 0.8 micron. Effectively softens water. KH cartridge can be regenerated at home using regular table salt.

Technical details:

Filtration rate: 2.0 L/min
Filtration capacity: 6 000 L

Removes:

water hardness, chlorine, phenol, pesticides, petroleum products, heavy metals



Weight: 3 kg
Size: 26 x 9 x 35 cm

Crystal AH

Reduces water hardness,
prevents scale formation.
For initially hard turbid water

Cartridges K5–KH–K7

Removes particles up to 0.8 micron. Effectively softens water. The system is designed for filtration of water with high content of sand, rust and other suspensions. KH cartridge can be regenerated at home using regular table salt.

Technical details:

Filtration rate: 2.0 L/min
Filtration capacity: 4 000 L

Removes:

water hardness, chlorine, phenol, pesticides, petroleum products, heavy metals

Crystal Solo

Crystal Solo (or Solo B) is the smallest of all under-sink kitchen filters. Despite its small size, it is perfectly effective in removing impurities, such as chlorine and organic compounds. The filter is equipped with a separate tap for filtered water.



Cartridge K2

Technical details:

Filtration rate: 2.5 L/min
Filtration capacity: 4000 L

Removes:

chlorine, phenol, pesticides, petroleum products, heavy metals



Cartridge K7B

Technical details:

Filtration rate: 2.5 L/min
Filtration capacity: 3000 L

Removes:

bacteria, chlorine, phenol, pesticides, petroleum products, heavy metals

Crystal Series Filter Cartridges

K2

Sorption



- Filters particles up to 3 microns.
- Effectively removes organic impurities, heavy metal ions and active chlorine.
- The patented technology Carbon Block + AQUALEN™ ensures deep water filtration.

K7B

Microfiltration



- Provides reliable protection against bacteria.
- Filters out microparticles up to 0.1 microns.

K3

Carbon block pre-filtration



- Filters particles up to 5 microns.
- Effectively removes organic impurities, heavy metal ions and active chlorine.

KH

Softening



- Reduces the water hardness.
- Extends the life of kitchen appliances.
- Cartridge can be regenerated at home.

K5

Mechanical pre-filtration



- Mechanical water treatment.
- Filters out sand, rust and other insoluble impurities.
- Extends the life of sorption cartridges.

K7

Final purification and conditioning



- Filters particles up to 0.8 microns.
- Effectively reduces chlorine, heavy metals (lead, copper, mercury) and organic impurities thanks to AQUALEN™ microfiber.

NEW

99,99%
PROTECTION
from bacteria
and protozoa



AUTO
LOCK

instant and
easy cartridge
replacement.



ECO PRO

for soft water

ECO H PRO

for hard water

Ensures protection against bacteria
and other microorganisms without
the use of chemical bactericides.

Removes:

- Bacteria
- Heavy metals
- Herbicides
- Pesticides
- Oil products
- Active chlorine
- Organic compounds

ECO PRO

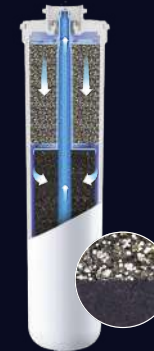
for soft water

Filter capacity 10 000 L

PRO 1

Stage 1

Pre-filtration



- Combines mechanical and sorption filtration in one cartridge.
- Increased AQUALEN™ microfiber content allows for enhanced dirt retention and iron removal.
- Removes particles up to 3 microns.

PRO 2

Stage 2

Deep filtration



- Solid carbon block contains activated coconut shell carbon and unique ion-exchange microfiber AQUALEN™. Effectively filters out active chlorine and organic impurities.
- Removes particles up to 2 microns.

PRO HF

Stage 3

Antibacterial protection



- Hollow fiber membrane ensures reliable protection against bacteria.
- Drinking water without boiling.
- Removes microparticles up to 0.1 microns.

ECO H PRO

for hard water

Filter capacity 8 000 L

PRO 1

Stage 1

Pre-filtration

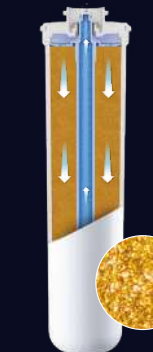


- Combines mechanical and sorption filtration in one cartridge.
- Increased AQUALEN™ microfiber content allows for enhanced dirt retention and iron removal.
- Removes particles up to 3 microns.

PRO H

Stage 2

Softening



- Contains a mix of high quality ion-exchange resins: they remove hardness salts and prevent limescale build-up.
- Can be easily regenerated using table salt.

PRO HF

Stage 3

Antibacterial protection



- Hollow fiber membrane ensures reliable protection against bacteria.
- Drinking water without boiling.
- Removes microparticles up to 0.1 microns.



**Cartridge B150 ECO —
hollow fiber membrane**

- The cartridge contains a hollow fiber membrane that traps microparticles up to 0.1 micron and provides reliable protection against bacteria.
- Removes organic impurities and heavy metals.

Filtration capacity: 8 000 L



**Cartridge B150 —
carbon block + AQUALEN™**

- Deep water purification.
- Removes heavy metals, oil products and organic carcinogenic impurities, chlorine, pesticides.

Filtration capacity: 12 000 L



Favorite

A durable and compact stainless steel filter with extra long-lasting protection against toxic impurities.

Advantages:

- Effectively removes chlorine, heavy metals, oil products and organic impurities from tap water.
- Stainless steel body, non-corrosive. Withstands pressure surges up to 30 atm.
- Takes up minimum space under the sink.

Sizes: 200 x 180 mm

Net weight: 2.5 L/min



3 in 1 faucets — C125, C126

**Hot, cold & filtered water
in a 3-way faucet**

- Ultra convenient and no need to install a second tap for filtered water.
- Premium quality SUS 304 food-grade stainless steel faucet body.
- Sleek Scandinavian design with 180 degree lever turning radius.
- Flexible SoftPEX connections made of XLPE stainless steel braid, leak-proof, with a service life of over 30 years.



C125



C126



Faucet Water Filters

AQUAPHOR faucet water filters can be connected to a standard kitchen mixer tap.

Reduces:

- Chlorine
- Phenol
- Heavy metals (copper, lead, mercury etc.)
- Pesticides
- Benzene
- Organic impurities
- Unpleasant tastes and odors

Modern



Modern is the most popular water faucet filter. Thanks to the combination of fibrous and granular adsorbents, Modern effectively removes harmful impurities from water.

Filter cartridge B200

Filter life: 4 000 L

Filter cartridge B200 H (for hard water)

Filter life: 1 000 L

Topaz



Filter life
750 L

Filter cartridge
AQUAPHOR Topaz

This stylish attachment to the faucet has a mode switch (filter / tap water). Due to a combination of fibrous and granular adsorbents, it effectively removes harmful impurities from the water.

NEW

Aquastyle

coffee machine
water filter*

* for several De'Longhi coffee machine models



Without scale
and white
coating



Brilliant
coffee flavor



Great resource
(250 cups)

The unique blend is specially designed to protect your coffee machine and bring out the flavour and aroma of your coffee; the mixture contains high-quality ion exchange resins and finely dispersed activated carbon with coconut shell.

The filter is designed to soften and improve 50 liters of water (an average of 2 months of using the device).



Compatible with the following De'Longhi coffee machines

BCO 411/421/431

EC 685/820/850/860/9335

ESAM 420/428/460/6600*/6620*/6650*/6700*/6704/6708/6720/6750/6850/6900/6904

ECAM — ETAM — EPAM

* 3 series only

A Breakthrough in Jug Water Filtration



Water Purification System **J.SHMIDT 500**

tritan™
from eastman

2.4 L

The most effective
mobile filter unit

MF hollow fiber
membrane prevents
bacteria and cysts

Micro pump powered
filtration delivers purified,
filtered water, fast



500 L

Filter Cartridge JS 500

Removes:

- Bacteria
- Chlorine

Reduces:

- Heavy metals like lead, copper, mercury
- Pharmaceuticals
- Pesticides, phenols
- Limescale

Microfiltration — hollow fiber membrane with 0.1 micron pores for absolute removal of bacteria, germs and other pathogens.



AQUALEN™ — patented ion-exchange microfiber. Combined with activated carbon, effectively reduces chlorine, heavy metals and other undesired substances.



- Patented automatic filtration system
- Microprocessor control
- Desktop USB charging
- Long-lasting performance
- Great tasting soft water
- Saves money and the environment

Filter Jugs

AQUAPHOR filter jugs are always at hand and ready to purify your drinking water at home or in the office.

AQUAPHOR jugs come in different colours and shapes to fit into any interior design. Smaller models with 2.4 L capacity fit inside the fridge door, while larger models hold up to 4.2 L to meet the needs of a bigger family.



Filtered water improves
aroma and taste
of tea and coffee



Cooking with filtered
water reveals deep rich
flavours of your dishes



Dishwasher safe*
* for the jugs with Tritan™ housing



Does not contain
Bisphenol A (BPA)



Kettles, coffee machines,
humidifiers and other devices
serve longer and require
less maintenance



Made in Estonia



Filter Jugs with A5 Cartridges



Premium

NEW



Lyon

Jug capacity: 3.8 L
Lid type: flip-top
Jug material: TRITAN™
Cartridge included A5
○ ●



Provence

Jug capacity: 4.2 L
Lid type: flip-top
Jug material: TRITAN™
Cartridge included A5
○ ●



Provence A5 Mg

Jug capacity: 4.2 L
Lid type: flip-top
Jug material: TRITAN™
Cartridge included A5 Mg
○ ●

Comfort



Atlant

Jug capacity: 4 L
Lid type: flip-top
Cartridge included A5
○ ●



Prestige

Jug capacity: 2.8 L
Lid type: slider
Cartridge included A5
○ ● ● ●



Arctic

Jug capacity: 2.8 L
Lid type: flip-top
Cartridge included A5
○ ● ● ●

Standard



Smile

Jug capacity: 2.9 L
Lid type: flip-top
Cartridge included A5
○ ● ●



Smile A5 Mg

Jug capacity: 2.9 L
Lid type: flip-top
Cartridge included A5 Mg
○ ● ●



Filter cartridges A5, A5 Mg, A5H

Innovative filtration
matrix — unique mix
of components



Reduces:

- Limescale
- Chlorine
- Pesticides
- Phenols
- Heavy metals
(lead, copper,
mercury, etc.)

A5
Universal
cartridge

A5 Mg
Enriched
with magnesium

A5H
For hard
water

350 L

tritan™
from eastman

Impact Resistance



Slider Lid



Flip-Top Lid



Mechanical Cartridge
Life Indicator

Filter Jugs with MAXFOR+ Cartridges



Premium



NEW

High quality glass

The glass does not contain cadmium or lead

Glass

Jug capacity: 2.5 L
Lid type: flip-top
Jug material: glass
Cartridge included MAXFOR+
○ ● ●



Onyx

Jug capacity: 4.2 L
Lid type: flip-top
Jug material: TRITAN™
Cartridge included MAXFOR+
○ ●

Comfort



Amethyst

Jug capacity: 2.8 L
Lid type: slider
Cartridge included MAXFOR+
● ● ● ● ● ●

Jasper

Jug capacity: 2.8 L
Lid type: flip-top
Cartridge included MAXFOR+
● ● ● ● ● ●

Standard



Time

Jug capacity: 2.5 L
Lid type: flip-top
Cartridge included MAXFOR+
● ● ● ● ●

Compact

Jug capacity: 2.4 L
Lid type: flip-top
Cartridge included MAXFOR+
● ● ● ● ●



200 L



Filter cartridges MAXFOR+, MAXFOR+ Mg MAXFOR+ H

Innovative filtration
matrix — unique mix
of components

Reduces:

- Limescale
- Chlorine
- Pesticides
- Phenols
- Heavy metals (lead, copper, mercury, etc.)



MAXFOR+
Universal
cartridge

MAXFOR+ Mg
Enriched with
magnesium

MAXFOR+ H
For hard
water

tritan™
from eastman

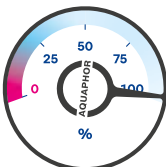
Impact Resistance



Slider Lid



Flip-Top Lid



Mechanical Cartridge
Life Indicator

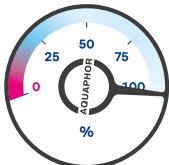
Filter Jugs with B15 Cartridges



Slider Lid



Flip-Top Lid



Mechanical Cartridge
Life Indicator

Comfort



Ideal

Jug capacity: 2.8 L
Lid type: slider



Standard



Standard

Jug capacity: 2.5 L
Lid type: flip-top



Compact B15

Jug capacity: 2.4 L
Lid type flip-top



170 L

Filter cartridges B15

Innovative filtration
matrix — unique mix
of components



B15
Universal
cartridge

Reduces:

- Limescale
- Chlorine
- Pesticides
- Phenols
- Heavy metals
(lead, copper,
mercury, etc.)

Less plastic — protect the planet and save your money.



350 L



200 L



170 L



Filter Bottle City

Filters while you drink

- Reduces active chlorine, heavy metals and mechanical impurities
- Improves the taste and smell of water
- Retains the natural mineral composition of water (Ca²⁺, Mg²⁺)



Filter bottle volume: 350 ml / 500 ml / 650 ml / 800 ml / 1000 ml

Stainless Steel Filter Bottle

**Light, durable
and compact
filter bottle
made of high-quality
and safe materials.**



480 ml



Shockproof material



Leak proof cap



Non-slip surface



Filter cartridge
resource 150 L



Easy to open
leak-proof lid



Double-wall
insulation



Soft touch
silicone body



Filter cartridge
resource 150 L

Softeners S550, S800, S1000

AQUAPHOR softeners are an advanced alternative to the classic whole-home water softeners. AQUAPHOR softeners are exceptionally efficient, with low salt consumption and small amount of water needed for regeneration.



Whole-House
Water Supply



Laundry
& Cleaning



Beauty
& SPA

Advantages

Compact, all-in-one softening and filtration system performs automatic prefiltration down to 20 microns, iron removal (up to 14 mg/L).

- **Uses up to 60% less salt**
Thanks to a unique tank design and extra-fine ion-exchange granules, salt efficiency is maximized.
- **2-in-1: water softening & iron removal**
The patented system design provides larger contact surface, eliminates channeling, while small ion-exchange granules regenerate faster and more efficiently. As a result — removal of high concentration of Fe (up to 14 mg/L) and hardness.
- **Up to 5 times less water for regeneration**
The innovative, patented Dual Core Valves of the AQUAPHOR softener assure long-term trouble-free performance, wasting minimal amount of water.
- **Low maintenance**
In addition to low salt consumption of the system, ion-exchange resin lasts 10 times longer than that in typical water softeners.
- **NSF certified**
- **Fully recyclable body and tank**

- **Models S550 P1, S800 P1, S1000 P1** additionally remove hydrogen sulfide
- **Model S1000A** removes nitrates



**S550
S550 P1**



**S800
S800 P1**



**S1000
S1000 P1
S1000A**

Specification	S550 S550 P1	S800 S800 P1	S1000 S1000 P1 S1000A
Maximum compensated hardness, mg/L	1 200	1 380	1 712
Maximum concentration of dissolved iron and manganese, mg/L	10	12	14
Water pressure, MPa		0,14–0,7	
Nominal / maximum flow, L/min	23/25	25/38	28/42
Capacity in HE mode, kg salt/gram hardness	0.6/49	1.0/66	1.1/67
Dimensions (length x height x width), mm	322 x 554 x 430	404 x 706 x 485	404 x 795 x 485
Gross weight, kg	35	43	48
Fine mesh resin, L	15	23	28

Viking Series

The AQUAPHOR Viking is made of high quality stainless steel withstanding temperatures of up to 90 °C. It is resistant to pressure surges, guarantees trouble-free operation and protects drinking water filters.



Whole-House
Water Supply



Laundry
& Cleaning



Beauty
& SPA

Advantages

AQUAPHOR Viking series delivers drinking water filtration as well as pre-filtration, depending on the cartridge type. Viking can be used with hot and cold water to remove suspended and dissolved compounds, heavy metals, chlorine and other contaminants.

- **Clean water at home**
Provides water for all bathing and housekeeping needs.
Viking protects all household appliances and lowers overall maintenance costs.
- **Simple to install and use**
Designed for easier installation and maintenance with the quick-release fittings.
You will not need any tools to replace filters on your own.

Viking PRO is a pre-filtration housing made of reinforced plastic to be used for cold water. Great for HoReCa and office use.



	Viking	Viking PRO	Viking Midi	Viking Midi PRO	Viking Mini
Dimensions	180 x 595 mm	225 x 606 mm	180 x 425 mm	225 x 440 mm	180 x 225 mm
Weight	4.0 kg	3.4 kg	3.4 kg	3.1 kg	3.1 kg
Cartridges for cold water	B520 PRO		B515 PRO		B505-13
Recommended flow rate	25 L/min		15 L/min		10 L/min
Filter cartridge capacity	150 000 L		90 000 L		30 000 L
Cartridges for hot water	B520-14	—	B515-14	—	B505-14
Recommended flow rate	25 L/min		15 L/min		10 L/min
Filter cartridge capacity	50 000 L/min		35 000 L/min		15 000 L/min
Cartridges for drinking water	B150 Plus		B150 Midi		—
Recommended flow rate	10 L/min		7 L/min		
Filter cartridge capacity	40 000 L		25 000 L		

Gross Series

The AQUAPHOR Gross combined high-strength plastic housing and wide choice of filter cartridges for pre-filtration and downstream water purification.



Whole-House
Water Supply



Laundry
& Cleaning



Beauty
& SPA

Advantages

Gross housing is a durable and reliable solution that can be equipped with sediment filters to protect home appliances from solid particles. Carbon Block + AQUALEN™ filter cartridges for Gross series will reduce chlorine, heavy metals and other dissolved impurities.

- **Long-lasting housing**
The filter housing is made of high quality plastic and can withstand high pressure. Can be used where high performance is required.
- **Protects household appliances & downstream filters**
- **Wide range of filter cartridges**
- **BigBlue standard replacement filters 10" and 20"**



B520-12
for Gross 20"

Manufactured using Carbon block + AQUALEN™ technology. Filters out organic impurities, heavy metals, active chlorine and other particles up to 5 micron.

B520-12 capacity: 60 000 L
Filtration speed: 20 L/min

B510-12 capacity: 30 000 L
Filtration speed: 10 L/min



B510-12
for Gross 10"



Polypropylene cartridges

Filter cartridge made of polypropylene thread forming a coil. Reduces sediment in water with high content of mechanical impurities. Fits standard housing for filters 10"SL, 10"BB and 20"BB. Effectively reduces microparticles up to 5 micron.



Horeca



Professional Kitchens
and Food industry



Small
Business



APRO 120



SST 300 LPH

Whole Home



Whole-House
Water Supper



Municipal
Entities



Nano Purity 1200



APRO 500



Multiarray of Monoblocks

Innovative RO monoblocks of 6000 LPH allow the user to set inexpensive, multipurpose water purification units into a high-capacity multiarray with up to 8 monoblocks combined under one master control board.



APRO SST 750

Ultra low-energy systems suit small & medium businesses in the food industry, professional kitchens, service and public entities. They are ready to supply as much clean filtered water as the business requires.

The stainless steel housing in the SST line suits areas of high humidity or sites with stringent cleanliness and hygiene requirements.

Professional



Medical and
Pharmaceutical



Agriculture
and Farming



Industrial
processes



Professional Kitchens
and Food industry



Hospitality
and Service

AQUAPHOR®
water filters

Aquaphor International OÜ
reg.nr. 11207974, L.Tolstoi 2a
40231, Sillamae, Estonia
www.aquaphor.com
www.aquaphor-pro.com