

**AQUAPHOR®**  
water filters

## Product Catalog

2025





## **AQUAPHOR** **Consumer, Professional** **and Industrial Products**

R&D leader in decentralized water purification from filter bottles for consumers to large systems for small towns and manufacturing plants. AQUAPHOR manufacturing, research and development facilities total 53 000 m<sup>2</sup>, including 54 000 m<sup>2</sup> of modern manufacturing in Estonia.

**AQUAPHOR** products and production facilities have been certified by TUV and SGS since 2006.



**Estonia, Narva**  
AQUAPHOR filter manufacturing

**Estonia, Sillamae**  
AQUAPHOR filter manufacturing



# AQUAPHOR Technologies



## Microfiber AQUALEN™

Patented AQUAPHOR AQUALEN™ adsorbents selectively remove heavy metals.

### Filter jugs: AQUALEN™ and Innovative Filtration Matrix

Patented AQUALEN™ microfibers shape sorbents into a matix, which ensures filtration of every water drop.

Cartridges with AQUALEN™ are especially efficient in reducing heavy metals (mercury, lead, copper etc.), as well are performing great reducing chlorine, limescale, pesticides, phenols and other harmful substances.

The contact surface of AQUALEN™ microfibers is 33 times larger than that of traditional ion-exchange sorbents. The larger the surface, the more impurities are filtered.

#### Basic Technology

Water flows through random channels:

- Limited contact time
- Limited filter performance
- Limited filter life



#### AQUALEN™ Advanced Technology

Water is guided to the enlarged filtration surface:

- Greater contact time
- Greater filter performance
- Greater filter life

### Undercounter filters with Microfiber AQUALEN™ and hollow-fiber ultrafiltration membranes

AQUAPHOR Carbon Blocks contain AQUALEN™ and powdered activated carbon, providing low flow resistance and high capacity for removing heavy metals, organic inpurities and bacteria.

### RO systems: Water-on-water Tank

Patented AQUAPHOR RO system provides high permeate recovery, lower energy consumption and efficient operation even with low tap pressure in a compact, durable housing.





## Reverse Osmosis Filtration System

RO membranes are the most effective way to remove salts, organic and inorganic impurities from water.

### Premium drinking water

RO system turns your tap water into pure, soft and great tasting water.

#### Reverse osmosis filters remove:

**viruses, bacteria,** heavy metals, nitrates, limescale, nitrites, arsenic, pesticides, active chlorine, organic compounds, colloidal iron, drugs (antibiotics, hormones)



### AUTO LOCK: Easy Use

Easy cartridge replacement.  
Clean and safe maintenance.



Long-term elimination of hardness and limescale.



Recommended for allergy patients and children.



AQUAPHOR water filtration is a sustainable way to cut daily plastic waste.

## RO-202S



The water filtration system with intelligent control



### Advantages:

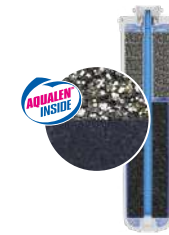
- Computer controlled drain water discharge.
- LED indicators for timely cartridge replacement.
- Mineralization of water with magnesium  $Mg^{2+}$ .
- 5 L storage tank.

**Built-in high pressure pump for maximum efficiency**

**Size:** 411 × 486 × 195 mm

**Net weight:** 12 kg

## Cartridges



### K1

#### Pre-filter 2 in 1

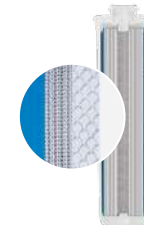
- Innovative cartridge combines mechanical and sorption filtration.
- High capacity prefiltration media removes sand and other particles up to 10 microns.
- Composite matrix with AQUALEN™ micro-fibers provide exceptionally high capacity for removal of rust and suspended solids.
- Sorption area cuts the impurities up to 3 microns thanks to the patented Carbon Block + AQUALEN™ technology.



### K2

#### Sorption treatment and filtration

- Reduces suspended and sediment particles 2 microns or larger.
- Carbon Block + AQUALEN™. Reduces organic impurities and active chlorine in the water.



### RO-100S

#### Membrane cartridge

- Reverse osmosis membrane removes even the tiniest amounts of impurities.
- Protection against bacteria, viruses, and protozoa (microorganisms).
- Capacity 380 L per day (100 gallons).



### K7BM

#### Microfiltration, water conditioning and mineralization

- Provides reliable protection against bacteria. Hollow fiber membrane removes all particles larger than 0.1 micron.
- Enriches water with the healthy minerals  $Mg^{2+}$  and  $Ca^{2+}$ .



## RO-102S EU



**A compact, productive and water-efficient RO system with a 5 L storage tank.**

### Advantages:

- Works with pressure as low as 2 bar.
- Takes up much less space under the sink than a basic reverse osmosis unit.
- The filter purifies water without the use of any chemical additives.

**Size:** 371 x 420 x 190 mm

**Net weight:** 6.1 kg

## Cartridges

### K1

#### Pre-filter 2 in 1

- Innovative cartridge combines mechanical and sorption filtration.
- High capacity prefiltration media removes sand and other particles up to 10 microns.
- Composite matrix with AQUALEN™ micro-fibers provide exceptionally high capacity for removal of rust and suspended solids.
- Sorption area cuts the impurities up to 3 microns thanks to the patented Carbon Block + AQUALEN™ technology.



### K2

#### Sorption treatment and filtration

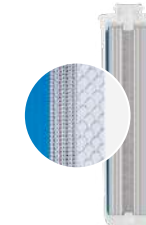
- Reduces suspended and sediment particles 2 microns or larger.
- Carbon Block + AQUALEN™. Reduces organic impurities and active chlorine in the water.



### RO-100S

#### Membrane cartridge

- Reverse osmosis membrane removes even the tiniest amounts of impurities.
- Protection against bacteria, viruses, and protozoa (microorganisms).
- Capacity 380 L per day (100 gallons).



### K7BM

#### Microfiltration, water conditioning and mineralization

- Provides reliable protection against bacteria. Hollow fiber membrane removes all particles larger than 0.1 micron.
- Enriches water with the healthy minerals  $Mg^{2+}$  and  $Ca^{2+}$ .





## RO-102S



**A compact, productive and water-efficient RO system with a 5 L storage tank.**

### Advantages:

- Works with pressure as low as 2 bar.
- Takes up much less space under the sink than a basic reverse osmosis unit.
- The filter purifies water without the use of any chemical additives.

**Size:** 371 x 420 x 190 mm

**Net weight:** 6.1 kg

## Cartridges

### K5

#### Mechanical pre-filter

- Filters sand, rust and other insoluble impurities.
- Reduces other sediment particles matter 5 microns or larger in the water.
- Extends effective filtration of the other cartridges.



### K2

#### Sorption treatment and filtration

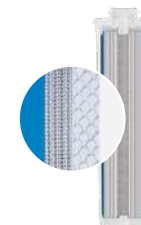
- Reduces suspended and sediment particles 2 microns or larger.
- Carbon Block + AQUALEN™. Reduces organic impurities and active chlorine in the water.



### RO-100S

#### Membrane cartridge

- Reverse osmosis membrane removes even the tiniest amounts of impurities.
- Protection against bacteria, viruses, and protozoa (microorganisms).
- Capacity 380 L per day (100 gallons).



### K7M

#### Water conditioning and mineralization

- Reduces suspended and sediment particles of 0.8 microns or larger.
- Enriches water with useful minerals  $Mg^{2+}$  and  $Ca^{2+}$  that improves taste and improves drinking water mineralization.
- Effectively reduces chlorine, heavy metals (lead, copper, mercury) and organic impurities thanks to our unique ion-exchange fiber AQUALEN™.







## RO-101S EU



**A compact, productive and water-efficient RO system with a 5 L storage tank.**

### Advantages:

- Works with pressure as low as 2 bar.
- Takes up much less space under the sink than a basic reverse osmosis unit.
- The filter purifies water without the use of any chemical additives.

**Size:** 371 x 420 x 190 mm

**Net weight:** 6.1 kg

## Cartridges

### K1

#### Pre-filter 2 in 1

- Innovative cartridge combines mechanical and sorption filtration.
- High capacity prefiltration media removes sand and other particles up to 10 microns.
- Composite matrix with AQUALEN™ microfibers provide exceptionally high capacity for removal of rust and suspended solids.
- Sorption area cuts the impurities up to 3 microns thanks to the patented Carbon Block + AQUALEN™ technology.



### K2

#### Sorption treatment and filtration

- Reduces suspended and sediment particles 2 microns or larger.
- Carbon Block + AQUALEN™. Reduces organic impurities and active chlorine in the water.



### RO-50S

#### Membrane cartridge

- Reverse osmosis membrane removes even the tiniest amounts of impurities.
- Protection against bacteria, viruses, and protozoa (microorganisms).
- Capacity 190 L per day (50 gallons).



### K7BM

#### Microfiltration, water conditioning and mineralization

- Provides reliable protection against bacteria. Hollow fiber membrane removes all particles larger than 0.1 micron.
- Enriches water with the healthy minerals  $Mg^{2+}$  and  $Ca^{2+}$ .





## RO-101S



**A compact, productive and water-efficient RO system with a 5 L storage tank.**

### Advantages:

- Works with pressure as low as 2 bar.
- Takes up much less space under the sink than a basic reverse osmosis unit.
- The filter purifies water without the use of any chemical additives.

**Size:** 371 x 420 x 190 mm

**Net weight:** 6.1 kg

## Cartridges

### K5

#### Mechanical pre-filter

- Filters sand, rust and other insoluble impurities.
- Reduces other sediment particles matter 5 microns or larger in the water.
- Extends effective filtration of the other cartridges.



### K2

#### Sorption treatment and filtration

- Reduces suspended and sediment particles 2 microns or larger.
- Carbon Block + AQUALEN™. Reduces organic impurities and active chlorine in the water.



### RO-50S

#### Membrane cartridge

- Reverse osmosis membrane removes even the tiniest amounts of impurities.
- Protection against bacteria, viruses, and protozoa (microorganisms).
- Capacity 190 L per day (50 gallons).



### K7M

#### Water conditioning and mineralization

- Reduces suspended and sediment particles of 0.8 microns or larger.
- Enriches water with useful minerals  $Mg^{2+}$  and  $Ca^{2+}$  that improves taste and improves drinking water mineralization.
- Effectively reduces chlorine, heavy metals (lead, copper, mercury) and organic impurities thanks to our unique ion-exchange fiber AQUALEN™.





OSMO PRO EU

The new RO system comes in two models of the different membrane capacity: 50 GPD and 100 GPD. It is a budget-friendly and practical solution with the tank for 8 L of soft, purified water. Effectively removes limescale and any impurities found in tap water.

99,99%  
PROTECTION  
from bacteria  
and protozoa

Mg<sup>2+</sup>  
enriches water  
with magnesium

COMPLETE  
ABSENCE  
NO SCALE



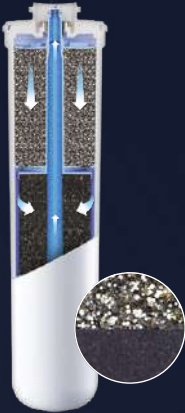
WATER PURIFIER  
OSMO PRO 50 EU

Membrane productivity up to **190** liters per day

WATER PURIFIER  
OSMO PRO 100 EU

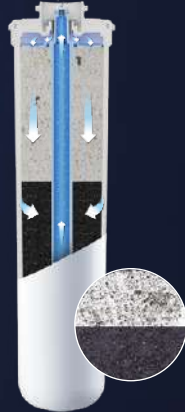
Membrane productivity up to **380** liters per day

PRO 1



- Stage 1  
Pre-filtration
- Combines mechanical and sorption filtration in one cartridge.
  - Increased AQUALENT™ microfiber content allows for enhanced dirt retention and iron removal.
  - Removes particles up to 3 microns.

PRO HFM

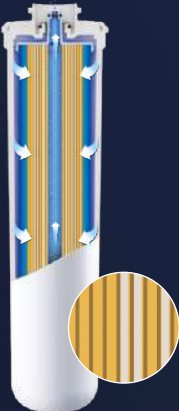


- Stage 3  
Removal of bacteria.  
Water mineralization
- Enriches the water with Mg, ensuring mineral balance.
  - Improves the taste of drinking water.
  - Antibacterial protection thanks to the hollow fiber membrane.
  - Removal of particles over 0.1 micron.

- Reduces:
- Bacteria
  - Viruses
  - Heavy metals
  - Arsenic
  - Nitrates, nitrites
  - Pesticides
  - Limescale
  - Active chlorine
  - Organic compounds
  - Colloidal iron
  - Pharmaceuticals (antibiotics, hormones)

PRO 50

PRO 100



- Stage 2  
Membrane cartridge
- Prevents scale build-up and iridescent film formation on the water surface caused by hardness salts. Protects your household kitchen appliances.
  - Removes iron (Fe<sup>2+</sup>) and manganese.
  - Contains a mix of high-quality ion-exchange resins.
- 50 gallons per day  
**190 L** per day
- 100 gallons per day  
**380 L** per day

Filter model	Delivery set
OSMO PRO 50 EU	PRO 1 PRO 50 PRO HFM
OSMO PRO 100 EU	PRO 1 PRO 100 PRO HFM



AUTO LOCK —  
instant and  
easy cartridge  
replacement.



OSMO PRO

The new RO system comes in two models of the different membrane capacity: 50 GPD and 100 GPD. It is a budget-friendly and practical solution with the tank for 8 L of soft, purified water. Effectively removes limescale and any impurities found in tap water.

99,99%  
PROTECTION  
from bacteria  
and protozoa

Mg<sup>2+</sup>  
enriches water  
with magnesium

COMPLETE  
ABSENCE  
NO SCALE



WATER PURIFIER  
OSMO PRO 50

Membrane productivity up to **190** liters per day

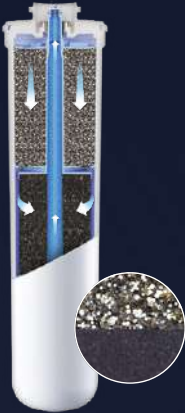


WATER PURIFIER  
OSMO PRO 100

Membrane productivity up to **380** liters per day



PRO 1

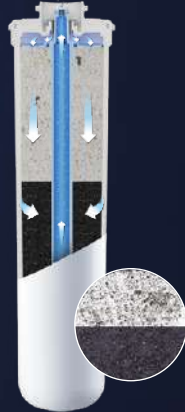


Stage 1

Pre-filtration

- Combines mechanical and sorption filtration in one cartridge.
- Increased AQUALENT™ microfiber content allows for enhanced dirt retention and iron removal.
- Removes particles up to 3 microns.

PRO M



Stage 3

Water mineralization

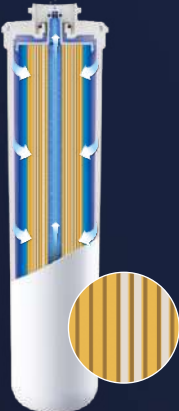
- Natural minerals enrich the water with magnesium.
- Improves the taste of drinking water.
- Creates optimal salt balance.
- Provides water conditioning.

Reduces:

- Bacteria
- Viruses
- Heavy metals
- Arsenic
- Nitrates, nitrites
- Pesticides
- Limestone
- Active chlorine
- Organic compounds
- Colloidal iron
- Pharmaceuticals (antibiotics, hormones)

PRO 50

PRO 100



Stage 2

Membrane cartridge

- Prevents scale build-up and iridescent film formation on the water surface caused by hardness salts. Protects your household kitchen appliances.
- Removes iron (Fe<sup>2+</sup>) and manganese.
- Contains a mix of high-quality ion-exchange resins.

50 gallons per day  
**190 L** per day

100 gallons per day  
**380 L** per day

Filter model	Delivery set
OSMO PRO 50	PRO 1 PRO 50 PRO M
OSMO PRO 100	PRO 1 PRO 100 PRO M



**AUTO LOCK** —  
instant and  
easy cartridge  
replacement.



## Under-Sink System

High-quality adsorption filters for efficient tap water filtration from both visible particles and dissolved substances.



### AUTO LOCK

Easy cartridge replacement.  
Clean and safe maintenance.



### STC: absolute safety

Materials used in the AQUAPHOR water filters meet "Food Grade" global safety standards.



### Tested for 250 000 cycles

It can hold cyclic pressure (water-hammer effects) in 250 000 cycles.

## Crystal Series Filters



**Weight:** 3 kg  
**Size:** 26 x 9 x 35 cm

### Crystal

Efficiently filters water while preserving its mineral composition.  
**For initially soft water**

### Cartridges K3-K2-K7

Removes particles up to 0.8 microns. High quality system for deep filtration of drinking water.

### Technical details:

Filtration rate: 2.5 L/min  
Filtration capacity: 8000 L

### Removes:

chlorine, phenol, pesticides, petroleum products, heavy metals



**Weight:** 3 kg  
**Size:** 26 x 9 x 35 cm

### Crystal A

Efficiently filters water while preserving its mineral composition.  
**For initially soft turbid water**

### Cartridges K5-K2-K7

Removes particles up to 0.8 microns.  
The system is designed for filtration of water with high content of sand, rust and other suspensions.

### Technical details:

Filtration rate: 2.0 L/min  
Filtration capacity: 6 000 L

### Removes:

chlorine, phenol, pesticides, petroleum products, heavy metals





**Weight:** 3 kg  
**Size:** 26 x 9 x 35 cm

## Crystal H

Reduces water hardness,  
prevents scale formation.  
**For initially hard water**

### Cartridges K3–KH–K7

Removes particles up to 0.8 micron. Effectively softens water. KH cartridge can be regenerated at home using regular table salt.

#### Technical details:

Filtration rate: 2.0 L/min  
Filtration capacity: 6 000 L

#### Removes:

water hardness, chlorine, phenol, pesticides, petroleum products, heavy metals



**Weight:** 3 kg  
**Size:** 26 x 9 x 35 cm

## Crystal AH

Reduces water hardness,  
prevents scale formation.  
**For initially hard turbid water**

### Cartridges K5–KH–K7

Removes particles up to 0.8 micron. Effectively softens water. The system is designed for filtration of water with high content of sand, rust and other suspensions. KH cartridge can be regenerated at home using regular table salt.

#### Technical details:

Filtration rate: 2.0 L/min  
Filtration capacity: 4 000 L

#### Removes:

water hardness, chlorine, phenol, pesticides, petroleum products, heavy metals

## Crystal Solo

Crystal Solo (or Solo B) is the smallest of all under-sink kitchen filters. Despite its small size, it is perfectly effective in removing impurities, such as chlorine and organic compounds. The filter is equipped with a separate tap for filtered water.



### Cartridge K2

#### Technical details:

Filtration rate: 2.5 L/min  
Filtration capacity: 4000 L

#### Removes:

chlorine, phenol, pesticides, petroleum products, heavy metals



### Cartridge K7B

#### Technical details:

Filtration rate: 2.5 L/min  
Filtration capacity: 3000 L

#### Removes:

bacteria, chlorine, phenol, pesticides, petroleum products, heavy metals

## Crystal Series Filter Cartridges

### K2

#### Sorption



- Filters particles up to 3 microns.
- Effectively removes organic impurities, heavy metal ions and active chlorine.
- The patented technology Carbon Block + AQUALEN™ ensures deep water filtration.

### K7B

#### Microfiltration



- Provides reliable protection against bacteria.
- Filters out microparticles up to 0.1 microns.

### K3

#### Carbon block pre-filtration



- Filters particles up to 5 microns.
- Effectively removes organic impurities, heavy metal ions and active chlorine.

### KH

#### Softening



- Reduces the water hardness.
- Extends the life of kitchen appliances.
- Cartridge can be regenerated at home.

### K5

#### Mechanical pre-filtration



- Mechanical water treatment.
- Filters out sand, rust and other insoluble impurities.
- Extends the life of sorption cartridges.

### K7

#### Final purification and conditioning



- Filters particles up to 0.8 microns.
- Effectively reduces chlorine, heavy metals (lead, copper, mercury) and organic impurities thanks to AQUALEN™ microfiber.



NEW

99,99%  
PROTECTION  
from bacteria  
and protozoa



AUTO  
LOCK

instant and  
easy cartridge  
replacement.



ECO PRO

for soft water

ECO H PRO

for hard water

Ensures protection against bacteria  
and other microorganisms without  
the use of chemical bactericides.

Removes:

- Bacteria
- Heavy metals
- Herbicides
- Pesticides
- Oil products
- Active chlorine
- Organic compounds

ECO PRO

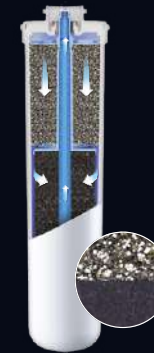
for soft water

Filter capacity 10 000 L

PRO 1

Stage 1

Pre-filtration



- Combines mechanical and sorption filtration in one cartridge.
- Increased AQUALEN™ microfiber content allows for enhanced dirt retention and iron removal.
- Removes particles up to 3 microns.

PRO 2

Stage 2

Deep filtration

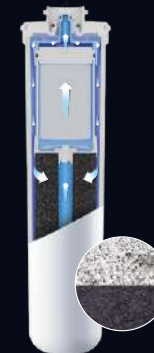


- Solid carbon block contains activated coconut shell carbon and unique ion-exchange microfiber AQUALEN™. Effectively filters out active chlorine and organic impurities.
- Removes particles up to 2 microns.

PRO HF

Stage 3

Antibacterial protection



- Hollow fiber membrane ensures reliable protection against bacteria.
- Drinking water without boiling.
- Removes microparticles up to 0.1 microns.

ECO H PRO

for hard water

Filter capacity 8 000 L

PRO 1

Stage 1

Pre-filtration

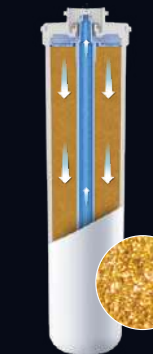


- Combines mechanical and sorption filtration in one cartridge.
- Increased AQUALEN™ microfiber content allows for enhanced dirt retention and iron removal.
- Removes particles up to 3 microns.

PRO H

Stage 2

Softening

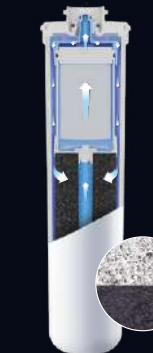


- Contains a mix of high quality ion-exchange resins: they remove hardness salts and prevent limescale build-up.
- Can be easily regenerated using table salt.

PRO HF

Stage 3

Antibacterial protection



- Hollow fiber membrane ensures reliable protection against bacteria.
- Drinking water without boiling.
- Removes microparticles up to 0.1 microns.





## Faucet Water Filters

AQUAPHOR faucet water filters can be connected to a standard kitchen mixer tap.

### Reduces:

- Chlorine
- Phenol
- Heavy metals (copper, lead, mercury etc.)
- Pesticides
- Benzene
- Organic impurities
- Unpleasant tastes and odors

### Modern



Modern is the most popular water faucet filter. Thanks to the combination of fibrous and granular adsorbents, Modern effectively removes harmful impurities from water.

#### Filter cartridge B200

Filter life: 4 000 L

#### Filter cartridge B200 H (for hard water)

Filter life: 1 000 L

### Topaz



**Filter life**  
750 L

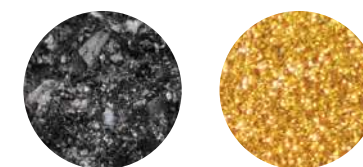
**Filter cartridge**  
AQUAPHOR Topaz

This stylish attachment to the faucet has a mode switch (filter / tap water). Due to a combination of fibrous and granular adsorbents, it effectively removes harmful impurities from the water.

## Aquastyle

### Coffee machine water filter\*

\* for several De'Longhi coffee machine models



The unique blend is specially designed to protect your coffee machine and bring out the flavour and aroma of your coffee; the mixture contains high-quality ion exchange resins and finely dispersed activated carbon with coconut shell.

The filter is designed to soften and improve 50 liters of water (an average of 2 months of using the device).

### Compatible with the following De'Longhi coffee machines

BCO 411/421/431

EC 685/820/850/860/9335

ESAM 420/428/460/6600\*/6620\*/6650\*/6700\*/6704/6708/6720/6750/6850/6900/6904

ECAM — ETAM — EPAM

\* 3 series only

## 3 in 1 faucets — C125, C126

### Hot, cold & filtered water in a 3-way faucet

- Ultra convenient and no need to install a second tap for filtered water.
- Premium quality SUS 304 food-grade stainless steel faucet body.
- Sleek Scandinavian design with 180 degree lever turning radius.
- Flexible SoftPEX connections made of XLPE stainless steel braid, leak-proof, with a service life of over 30 years.



C125

C126



## A Breakthrough in Jug Water Filtration



### Water Purification System **J.SHMIDT 500**

**tritan™**  
from eastman

2.4 L

The most effective  
mobile filter unit

MF hollow fiber  
membrane prevents  
bacteria and cysts

Micro pump powered  
filtration delivers purified,  
filtered water, fast



500 L

### Filter Cartridge JS 500

#### Removes:

- Bacteria
- Chlorine

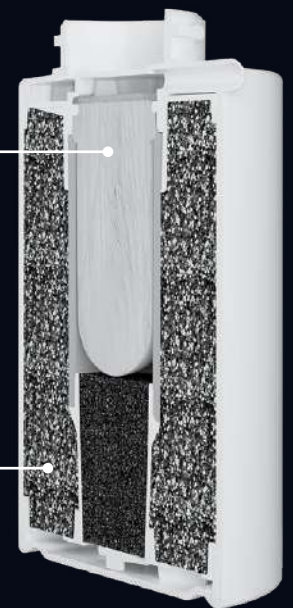
#### Reduces:

- Heavy metals like lead, copper, mercury
- Pharmaceuticals
- Pesticides, phenols
- Limescale

**Microfiltration** — hollow fiber membrane with 0.1 micron pores for absolute removal of bacteria, germs and other pathogens.



**AQUALEN™** — patented ion-exchange microfiber. Combined with activated carbon, effectively reduces chlorine, heavy metals and other undesired substances.



- Patented automatic filtration system
- Microprocessor control
- Desktop USB charging
- Long-lasting performance
- Great tasting soft water
- Saves money and the environment



# Filter Jugs

**AQUAPHOR filter jugs are always at hand and ready to purify your drinking water at home or in the office.**

AQUAPHOR jugs come in different colours and shapes to fit into any interior design. Smaller models with 2.4 L capacity fit inside the fridge door, while larger models hold up to 4.2 L to meet the needs of a bigger family.



Filtered water improves  
aroma and taste  
of tea and coffee



Cooking with filtered  
water reveals deep rich  
flavours of your dishes



Dishwasher safe\*  
\* for the jugs with Tritan™ housing



Does not contain  
Bisphenol A (BPA)



Kettles, coffee machines,  
humidifiers and other devices  
serve longer and require  
less maintenance



Made in Estonia





## Filter Jugs with A5 Cartridges



### Premium

NEW



#### Nord

Jug capacity: 2.5 L  
Lid type: flip-top  
Jug material: glass



NEW



#### Lyon

Jug capacity: 3.8 L  
Lid type: flip-top  
Jug material: TRITAN™



#### Provence

Jug capacity: 4.2 L  
Lid type: flip-top  
Jug material: TRITAN™



#### Orleans A5 Mg

Jug capacity: 4.2 L  
Lid type: flip-top  
Jug material: TRITAN™



### Comfort



#### Atlant

Jug capacity: 4 L  
Lid type: flip-top



#### Prestige

Jug capacity: 2.8 L  
Lid type: slider



#### Arctic

Jug capacity: 2.8 L  
Lid type: flip-top



### Standard



#### Smile

Jug capacity: 2.9 L  
Lid type: flip-top



350 L

### Filter cartridges A5, A5 Mg, A5H

Innovative filtration  
matrix — unique mix  
of components



#### Reduces:

- Limescale
- Chlorine
- Pesticides
- Phenols
- Heavy metals  
(lead, copper,  
mercury, etc.)

**A5**  
Universal  
cartridge

**A5 Mg**  
Enriched  
with magnesium

**A5H**  
For hard  
water

tritan™  
from eastman

Impact Resistance



Slider Lid



Flip-Top Lid



Mechanical Cartridge  
Life Indicator



**Filter Jugs with MAXFOR+ Cartridges**



**Premium**

**NEW**



**Glass**

Jug capacity: 2.5 L  
Lid type: flip-top  
Jug material: glass



**NEW**



**Lago**

Jug capacity: 3.8 L  
Lid type: flip-top  
Jug material: TRITAN™



**Onyx**

Jug capacity: 4.2 L  
Lid type: flip-top  
Jug material: TRITAN™



**Comfort**

**NEW**



**Fresh**

Jug capacity: 3.2 L  
Lid type: flip-top



**Amethyst**

Jug capacity: 2.8 L  
Lid type: slider



**Jasper**

Jug capacity: 2.8 L  
Lid type: flip-top



**Time**

Jug capacity: 2.5 L  
Lid type: flip-top



**Compact**

Jug capacity: 2.4 L  
Lid type: flip-top



**Standard**



**Filter cartridges**  
**MAXFOR+,**  
**MAXFOR+ Mg**  
**MAXFOR+ H**

**Innovative filtration**  
**matrix — unique mix**  
**of components**



**Reduces:**

- Limescale
- Chlorine
- Pesticides
- Phenols
- Heavy metals (lead, copper, mercury, etc.)

**MAXFOR+**  
Universal  
cartridge

**MAXFOR+ Mg**  
Enriched with  
magnesium

**MAXFOR+ H**  
For hard  
water

**tritan™**  
from eastman

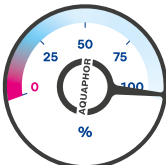
Impact Resistance



Slider Lid



Flip-Top Lid



Mechanical Cartridge  
Life Indicator



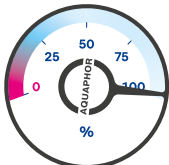
# Filter Jugs with B15 Cartridges



Slider Lid



Flip-Top Lid



Mechanical Cartridge Life Indicator

## Comfort



### Ideal

Jug capacity: 2.8 L  
Lid type: slider



## Standard



### Standard

Jug capacity: 2.5 L  
Lid type: flip-top



### Compact B15

Jug capacity: 2.4 L  
Lid type: flip-top



170 L

## Filter cartridges B15

Innovative filtration  
matrix — unique mix  
of components



B15  
Universal  
cartridge

### Reduces:

- Limescale
- Chlorine
- Pesticides
- Phenols
- Heavy metals  
(lead, copper,  
mercury, etc.)

Less plastic — protect the planet and save your money.



350 L



200 L



170 L





## Filter Bottle City

### Filter on the go & explore responsibly!

- Reduces active chlorine, heavy metals and mechanical impurities
- Improves the taste and smell of water
- Retains the natural mineral composition of water ( $\text{Ca}^{2+}$ ,  $\text{Mg}^{2+}$ )



350 ml

500 ml

650 ml

800 ml

1000 ml

## Filter Bottle City Cool

### Filter bottle with double-wall stainless steel insulation



500 ml



Shockproof material



Leak proof cap



Non-slip surface



Filter cartridge  
resource 150 L



Leak proof cap



Double-wall Stainless  
Steel



Leak proof cap

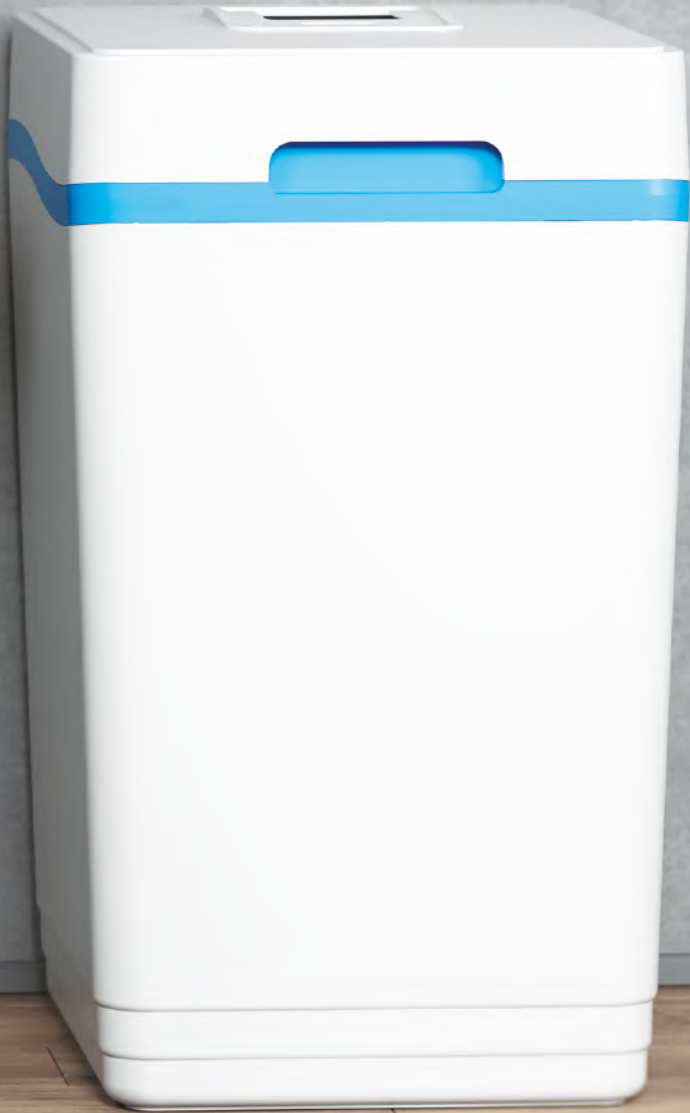


Filter cartridge  
resource 150 L



# Softeners S550, S800, S1000

AQUAPHOR softeners are an advanced alternative to the classic whole-home water softeners. AQUAPHOR softeners are exceptionally efficient, with low salt consumption and small amount of water needed for regeneration.



Whole-House  
Water Supply



Laundry  
& Cleaning



Beauty  
& SPA

## Advantages

Compact, all-in-one softening and filtration system performs automatic prefiltration down to 20 microns, iron removal (up to 14 mg/L).

- **Uses up to 60% less salt**  
Thanks to a unique tank design and extra-fine ion-exchange granules, salt efficiency is maximized.
- **2-in-1: water softening & iron removal**  
The patented system design provides larger contact surface, eliminates channeling, while small ion-exchange granules regenerate faster and more efficiently. As a result — removal of high concentration of Fe (up to 14 mg/L) and hardness.
- **Up to 5 times less water for regeneration**  
The innovative, patented Dual Core Valves of the AQUAPHOR softener assure long-term trouble-free performance, wasting minimal amount of water.
- **Low maintenance**  
In addition to low salt consumption of the system, ion-exchange resin lasts 10 times longer than that in typical water softeners.
- **NSF certified**
- **Fully recyclable body and tank**

- **Models S550 P1, S800 P1, S1000 P1** additionally remove hydrogen sulfide
- **Model S1000A** removes nitrates



**S550**  
**S550 P1**



**S800**  
**S800 P1**



**S1000**  
**S1000 P1**  
**S1000A**

Specification	S550 S550 P1	S800 S800 P1	S1000 S1000 P1 S1000A
Maximum compensated hardness, mg/L	1 200	1 380	1 712
Maximum concentration of dissolved iron and manganese, mg/L	10	12	14
Water pressure, MPa		0,14–0,7	
Nominal / maximum flow, L/min	23/25	25/38	28/42
Capacity in HE mode, kg salt/gram hardness	0.6/49	1.0/66	1.1/67
Dimensions (length x height x width), mm	322 x 554 x 430	404 x 706 x 485	404 x 795 x 485
Gross weight, kg	35	43	48
Fine mesh resin, L	15	23	28



# Viking Series

The AQUAPHOR Viking is made of high quality stainless steel withstanding temperatures of up to 90 °C. It is resistant to pressure surges, guarantees trouble-free operation and protects drinking water filters.



Whole-House  
Water Supply



Laundry  
& Cleaning



Beauty  
& SPA

## Advantages

AQUAPHOR Viking series delivers drinking water filtration as well as pre-filtration, depending on the cartridge type. Viking can be used with hot and cold water to remove suspended and dissolved compounds, heavy metals, chlorine and other contaminants.

- **Clean water at home**  
Provides water for all bathing and housekeeping needs.  
Viking protects all household appliances and lowers overall maintenance costs.
- **Simple to install and use**  
Designed for easier installation and maintenance with the quick-release fittings.  
You will not need any tools to replace filters on your own.

**Viking PRO is a pre-filtration housing made of reinforced plastic to be used for cold water. Great for HoReCa and office use.**



Cartridge  
**B520 PRO**  
**B515 PRO**  
for cold water

Patented high-capacity  
corrugated multilayer  
filtration cartridge



	Viking	Viking PRO	Viking Midi	Viking Midi PRO	Viking Mini
Dimensions	180 x 595 mm	225 x 606 mm	180 x 425 mm	225 x 440 mm	180 x 225 mm
Weight	4.0 kg	3.4 kg	3.4 kg	3.1 kg	3.1 kg
<b>Cartridges for cold water</b>	<b>B520 PRO</b>		<b>B515 PRO</b>		<b>B505-13</b>
Recommended flow rate	25 L/min		15 L/min		10 L/min
Filter cartridge capacity	150 000 L		90 000 L		30 000 L
<b>Cartridges for hot water</b>	<b>B520-14</b>	—	<b>B515-14</b>	—	<b>B505-14</b>
Recommended flow rate	25 L/min		15 L/min		10 L/min
Filter cartridge capacity	50 000 L/min		35 000 L/min		15 000 L/min
<b>Cartridges for drinking water</b>	<b>B150 Plus</b>		<b>B150 Midi</b>		—
Recommended flow rate	10 L/min		7 L/min		
Filter cartridge capacity	40 000 L		25 000 L		



## Gross Series

The AQUAPHOR Gross combined high-strength plastic housing and wide choice of filter cartridges for pre-filtration and downstream water purification.



Whole-House  
Water Supply



Laundry  
& Cleaning



Beauty  
& SPA

### Advantages

Gross housing is a durable and reliable solution that can be equipped with sediment filters to protect home appliances from solid particles. Carbon Block + AQUALEN™ filter cartridges for Gross series will reduce chlorine, heavy metals and other dissolved impurities.

- **Long-lasting housing**  
The filter housing is made of high quality plastic and can withstand high pressure. Can be used where high performance is required.
- **Protects household appliances & downstream filters**
- **Wide range of filter cartridges**
- **BigBlue standard replacement filters 10" and 20"**



**B520-12**  
for Gross 20"

Manufactured using Carbon block + AQUALEN™ technology. Filters out organic impurities, heavy metals, active chlorine and other particles up to 5 micron.

**B520-12 capacity:** 60 000 L  
**Filtration speed:** 20 L/min

**B510-12 capacity:** 30 000 L  
**Filtration speed:** 10 L/min



**B510-12**  
for Gross 10"



### Polypropylene cartridges

Filter cartridge made of polypropylene thread forming a coil. Reduces sediment in water with high content of mechanical impurities. Fits standard housing for filters 10"SL, 10"BB and 20"BB. Effectively reduces microparticles up to 5 micron.





**Horeca**



Professional Kitchens  
and Food industry



Small  
Business



**APRO 120**



**SST 300 LPH**

**Whole Home**



Whole-House  
Water Supper



Municipal  
Entities



**Nano Purity 1200**



**APRO 500**





### **Multiarray of Monoblocks**

Innovative RO monoblocks of 6000 LPH allow the user to set inexpensive, multipurpose water purification units into a high-capacity multiarray with up to 8 monoblocks combined under one master control board.



### **APRO SST 750**

Ultra low-energy systems suit small & medium businesses in the food industry, professional kitchens, service and public entities. They are ready to supply as much clean filtered water as the business requires.

The stainless steel housing in the SST line suits areas of high humidity or sites with stringent cleanliness and hygiene requirements.

## **Professional**



Medical and  
Pharmaceutical



Agriculture  
and Farming



Industrial  
processes



Professional Kitchens  
and Food industry



Hospitality  
and Service







**AQUAPHOR®**  
water filters

Aquaphor International OÜ  
reg.nr. 11207974, L.Tolstoi 2a  
40231, Sillamae, Estonia  
[www.aquaphor.com](http://www.aquaphor.com)  
[www.aquaphor-pro.com](http://www.aquaphor-pro.com)